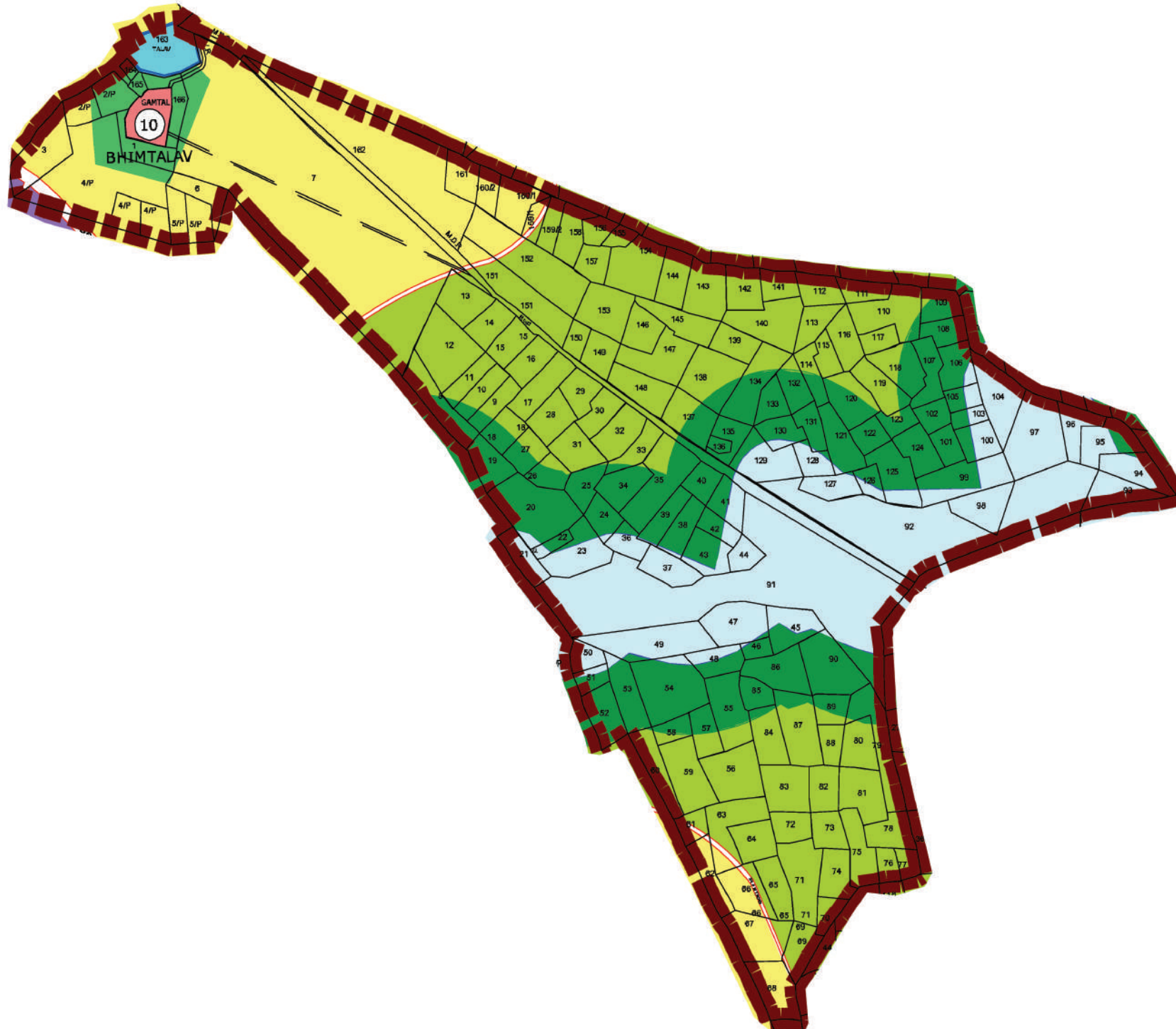


PROPOSED LANDUSE PLAN : 2010-2040

SANCTIONED BY APEX AUTHORITY (GIDB)
ON 10/09/2012 AND CAME INTO
FORCE ON 10-09-2012



LEGEND

- DSIRDA BOUNDARY
- TALUKA BOUNDARY
- VILLAGE BOUNDARY
- GAMTAL
- SURVEY NUMBER BOUNDARY
- EXISTING STATE HIGHWAY
- EXISTING ROADS
- RIVER /CANAL
- TALAV / LAKE
- PROPOSED ROADS
- COASTAL REGULATION ZONE
- GREEN SPACE
- RECREATION,SPORTS AND ENTERTAINMENT ZONE
- TOURISM: RESORTS
- VILLAGE BUFFER
- AGRICULTURE
- STRATEGIC INFRASTRUCTURE
- CITY CENTRE
- LOGISTICS
- HIGH ACCESS CORRIDOR
- RESIDENTIAL
- SOLAR PARK
- PUBLIC FACILITIES ZONE
- KNOWLEDGE AND I.T.
- INDUSTRIAL



NOT TO SCALE

10. BHIMTALAV