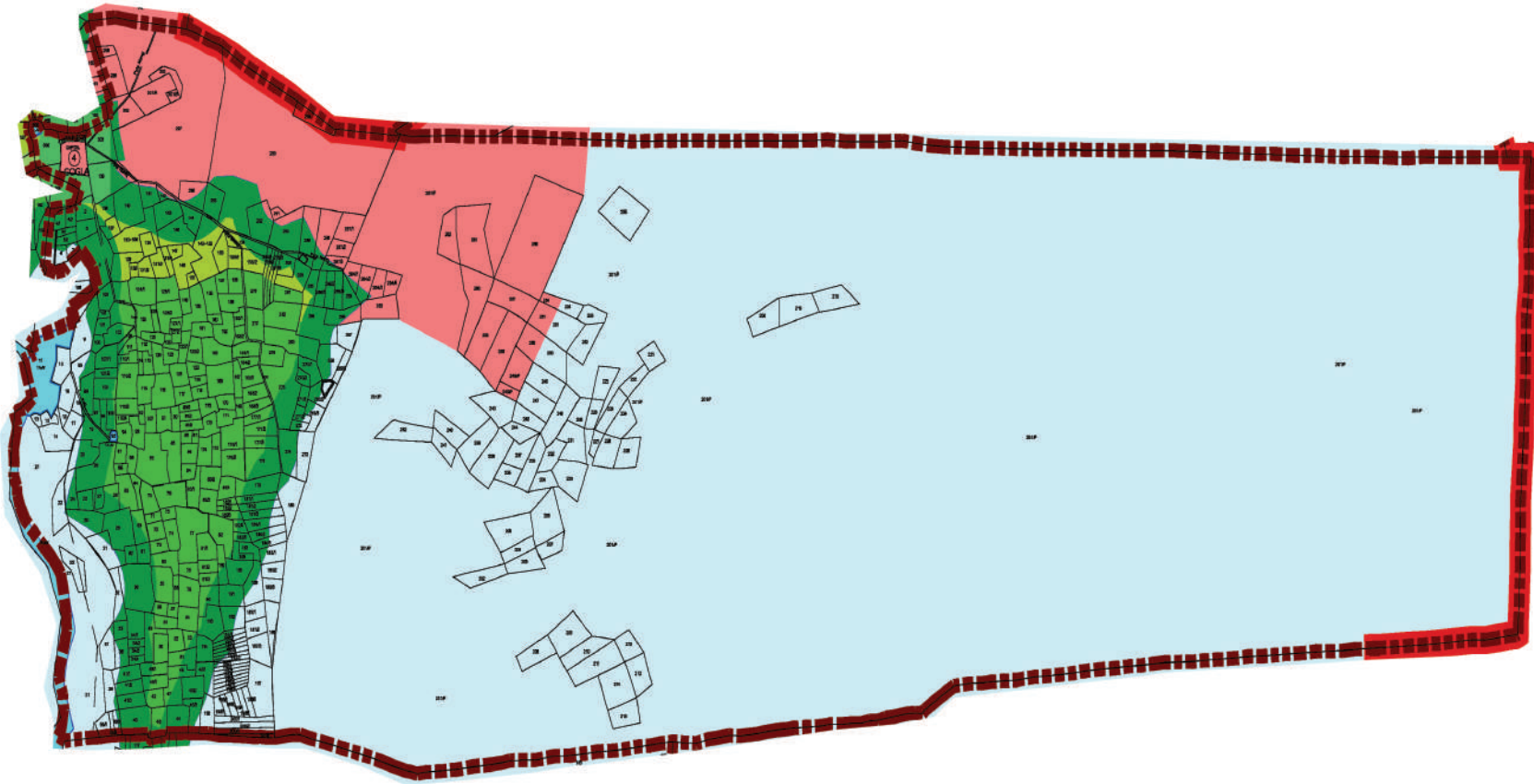


PROPOSED LANDUSE PLAN : 2010-2040

SANCTIONED BY APEX AUTHORITY (GIDB)  
ON 10/09/2012 AND CAME INTO  
FORCE ON 10-09-2012

LEGEND

-  DSIRDA BOUNDARY
-  TALUKA BOUNDARY
-  VILLAGE BOUNDARY
-  GAMTAL
-  SURVEY NUMBER BOUNDARY
-  EXISTING STATE HIGHWAY
-  EXISTING ROADS
-  RIVER / CANAL
-  TALAV / LAKE
-  PROPOSED ROADS
-  COASTAL REGULATION ZONE
-  GREEN SPACE
-  RECREATION, SPORTS AND ENTERTAINMENT ZONE
-  TOURISM: RESORTS
-  VILLAGE BUFFER
-  AGRICULTURE
-  STRATEGIC INFRASTRUCTURE
-  CITY CENTRE
-  LOGISTICS
-  HIGH ACCESS CORRIDOR
-  RESIDENTIAL
-  SOLAR PARK
-  PUBLIC FACILITIES ZONE
-  KNOWLEDGE AND I.T.
-  INDUSTRIAL



NOT TO SCALE

# 4.GOGLA